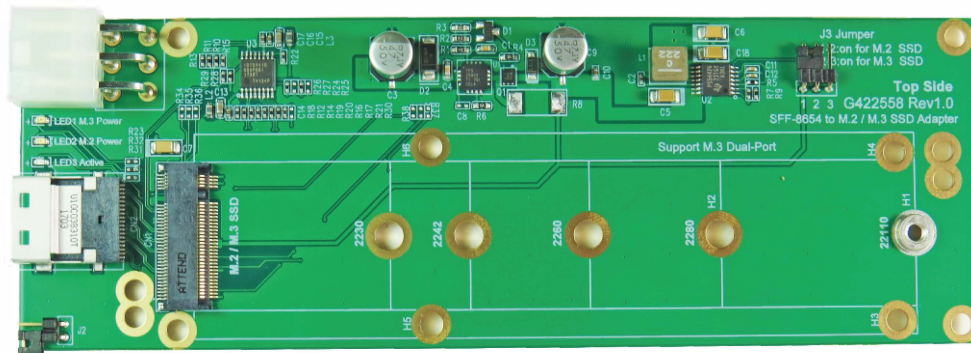


Slimline SAS (SFF-8654) to M.2 NVMe SSD Adapter



Features

- Build in Hot Plug power IC protection for M.2, M.3 SSD
- SFF-8654 slimline SAS to M.2, M.3 convert
- Build in SFF-8654 connector, pin-out defined by PCIe
- Build in M.2 M-key connector, pin-out defined by PCIe
- LED 1 Green LED on indicates M.3 NF1 SSD power ready
- LED 2 Green LED on M.2 SSD power ready
- LED 3 Red LED Blinking indicates SSD active status

Specifications

- Compliant with NVM Express 1.2
- Support PCI Express Base Specification Rev 3.1
- Support PCI Express M.2 Specification Revision 0.7, Version 1.0
- Compliant with SFF-8654 Specification Rev 1.0
- Support Samsung M.3 NF1 Datasheet_v0.4

Specifications

- SFF-8654 to SFF-8654 Cable for SFF-8654 Slimline SAS Host by SFF-9402 defined PCIe RefClk p,n
- SFF-8611 to SFF-8654 Cable for SFF-8654 Slimline SAS Host by SFF-9402 defined PCIe RefClk p,n
- SFF-8643 to SFF-8654 Cable for SFF-8643 mini SASHD Host by INTEL define PCIe RefClk p,n

Support M.2(NGFF) SSD Form factor

- Type 22110-D2-B-M: 110mm(L) x 22mm(W)
- Type 2280-D2-B-M: 80mm(L) x 22mm(W)
- Type 2260-D2-B-M: 60mm(L) x 22mm(W)
- Type 2242-D2-B-M: 42mm(L) x 22mm(W)
- Type 2230-D2-B-M: 30mm(L) x 22mm(W)

Support M.3 SSD Form factor

- Type 22110-D2-B-M: 110mm(L) x 30.5mm(W)